

## Welcome to Kitley Corners Farm – Sheepdog Trial

We are very excited to be hosting our first trial in Ontario. We hope you all enjoy yourselves.

Depending on the mapping application or your GPS, the property is referenced as **835 Kitley Line 2**, Jasper Ontario or **835 Line 2 Rd**, Jasper Ontario. We are between Hwy 29 (Brockville Hwy) & Hwy 17 (Jasper Hwy) and Kitley Line 1 & Kitley Line 3.



See Google Maps at <https://goo.gl/maps/L1QUR7TWkt1C7mLr6>

If you have any problems, call Celeste at 613.284.6611 or email [Ceeley.Lacroix@gmail.com](mailto:Ceeley.Lacroix@gmail.com)

### Sheepdog Trial: October 14 to 16, 2022

---

Novice classes (Novice, Pro Novice and Ranch) on Friday October 14<sup>th</sup> are full. As a contingency for the limited daylight that time of year, the second Ranch class may be run 1<sup>st</sup> on Saturday October 15<sup>th</sup>. Final decision will be made on Friday based on time/progress.

Classes will be run in the following order:

- Friday: Pro Novice 1, Novice 1, Ranch 1, Pro Novice 2, Novice 2, Ranch 2 (time permitting)
- Saturday: Ranch 2 (if not run Friday), Nursery 1, Open 1
- Sunday: Nursery 2, Open 2

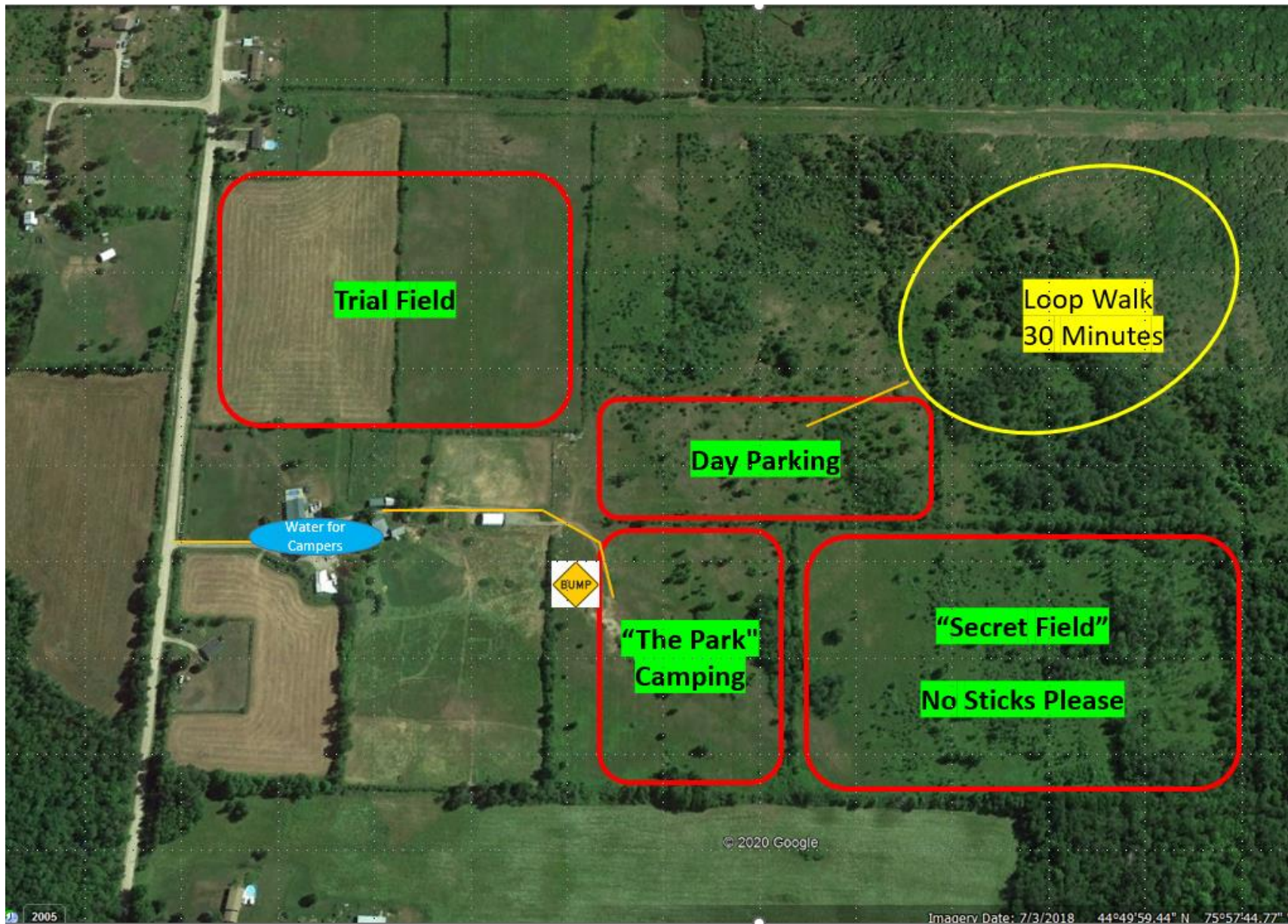
Start time for 1<sup>st</sup> handlers meeting will be 8:45am on Friday and Saturday with an anticipated 1<sup>st</sup> run at 9:00am. Sundays start time will be earlier to enable travel requirements.

A few logistical details:

- Camping is available in “The Park”. It is rocky (Canadian Shield) so your big rigs should be fine. The hardest turn is through our front gate. There is a white hose attached to the house so you don’t have to carry too much water.
- If you are not camping, please park in the day parking area.
- Enjoy our loop walk with your dogs. It usually takes about 30 minutes. It connects to the PowerLine for those of you wanting extended walk.
- Porta Potties will be provided by entrance to Trial Field
- If you have a spare pop up tent and it’s not too much trouble for you to bring it, we can probably use it.
- Soup, Sandwiches and desserts will be provided for lunch in the house, you will have an opportunity to warm up by the fire.
- Beverages and snacks will also be available, please feel free to bring something to share if you like
- We have a photographer (Lorraine Lacroix, Celeste’s Sister) who will be taking photos of you and your dog at the “Photo Booth”. Photos will be attached to the ribbons so please be sure we get your photo.
- WiFi is available at the barn. Password is posted on the door.

We wish everyone success and are grateful for your support of our trial.

Celeste Lacroix & Brian Epp



**Trial Field**

**Loop Walk  
30 Minutes**

**Day Parking**

**Water for  
Campers**



**"The Park"  
Camping**

**"Secret Field"  
No Sticks Please**

© 2020 Google

2005

Imagery Date: 7/3/2018 44°49'59.44" N 75°57'44.77" W